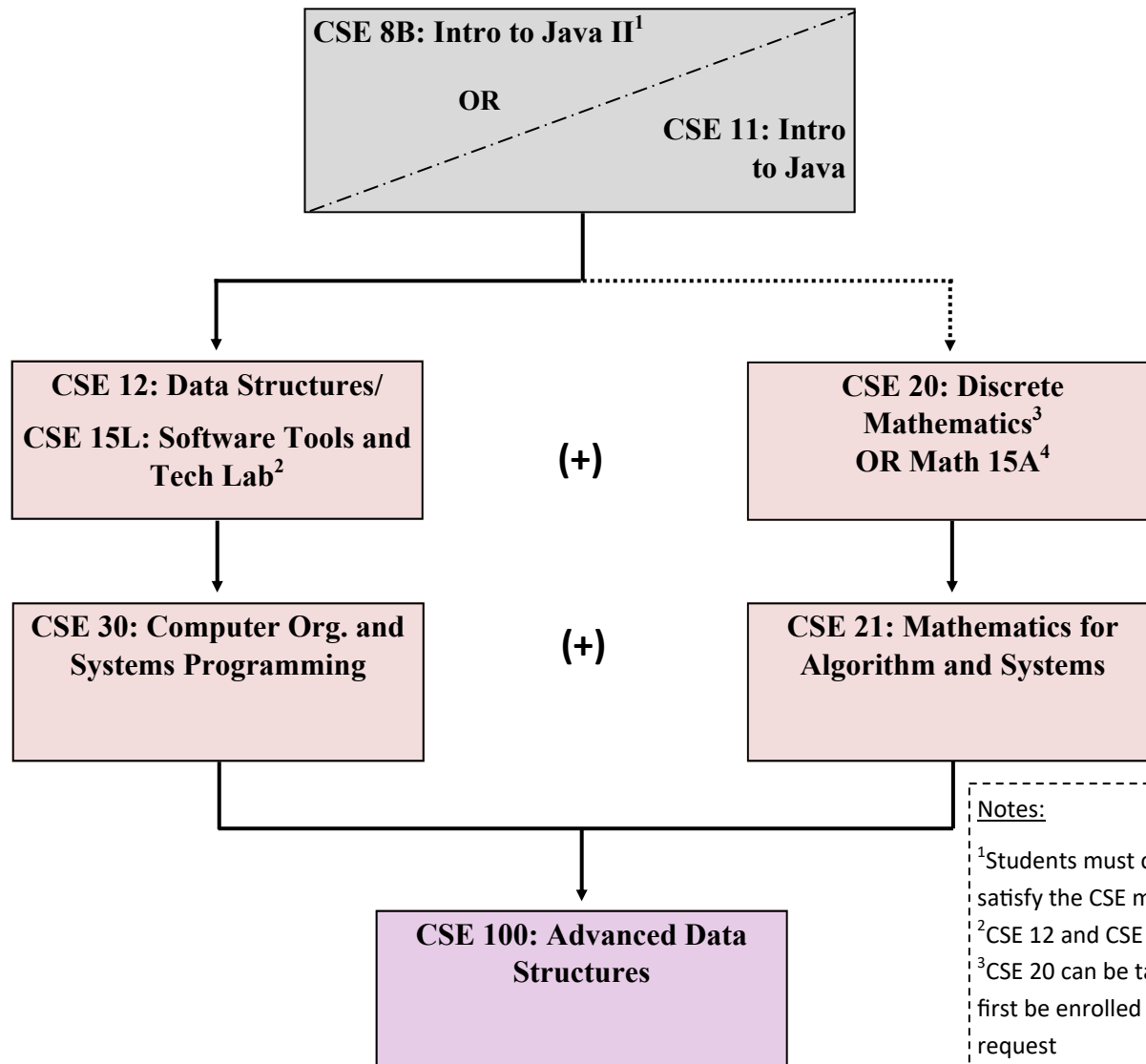




University of California San Diego
 Department of Computer Science and Engineering
 Capped Admission Program Eligibility Criteria Course
 Flowchart



Eligibility Requirements:

1. Minimum of **eight** units of CSE courses completed at UC San Diego for a letter grade, drawn from the following courses: CSE 8B or CSE 11, CSE 12, CSE 15L, CSE 20 (or Math 15A or MATH 109), CSE 21, CSE 30, and CSE 100.
2. All of the following courses (or accepted equivalents) must be completed **prior** to application: CSE 8B or 11, CSE 12, CSE 15L, and CSE 20 or Math 15A or MATH 109. All courses must be completed with a letter grade.

More information can be found:

<https://cse.ucsd.edu/node/279>

KEY

-→ Pre/Co-requisite
- Prerequisite
- (+) Can take during same quarter

Notes:

- ¹Students must complete CSE 8A before moving on to CSE 8B. CSE 8A can satisfy the CSE major lower-division elective requirement for CSE Majors.
- ²CSE 12 and CSE 15L are co-requisites.
- ³CSE 20 can be taken concurrently with CSE 8B or CSE 11. Students must first be enrolled in CSE 8B or CSE 11 and then may submit an EASy request